

It's All About Your Data

VTrak[™] 8110 RAID Storage System

VTrak[™] 8110 RAID Storage System

High-availability, high-performance RAID storage connected through a standard SCSI interface

Cost-effective, easy-to-manage storage for outstanding productivity

The Promise VTrak 8110 is optimized for organizations deploying cost-effective, small to medium application clusters, disk-to-disk backup and direct-attach storage solutions. The dual Ultra 160 SCSI host interface ports offer the ease of management and performance required by companies running popular departmental and back-office applications including file/print, e-mail, light database and Web services. This reliable storage system delivers advanced functionality and performance, while offering high availability and data integrity—all at a very affordable price.

The VTrak 8110—small in price, big on capability

The VTrak 8110 leverages high performance, hot-swap Serial ATA drives—the cost-effective benchmark for high-density storage—offering an exceptional entry point for direct attach servers and small clusters. Industry-standard SCSI host ports provide legacy connectivity support. Enterprise-ready features, such as fully redundant power and cooling, a battery-backed cache, and Promise's Predictive Data Migration[™] and PerfectRAID[™] technologies provide high levels of availability and data integrity. And now with the performance advantages of Native Command Queuing today's advanced SATA-II hard drives can deliver compelling I/O performance in even the most demanding environments.

High storage density for flexibility and economy

The VTrak 8110 packs up to 8 drives per system in just 2U of standard 19" rack space. The VTrak's compact form factor maximizes density, increasing capacity per unit of rack space. By taking advantage of unsurpassed capacity of SATA and PATA drives, the VTrak system delivers the highest capacity levels available. Multiple VTrak systems can also be daisy chained using standard SCSI bus features to deliver massive storage to capacity hungry applications such as disk-to-disk backup and media archiving. And with the advanced LUN Carving technology up to 16 logical drives (LUNs) per disk array, 64 total LUNs per subsystem can be created for optimal application placement and protection.

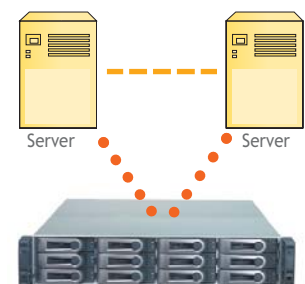
Simple, yet powerful remote management

Promise Array Manager enables effective configuration and monitoring of all VTrak systems in your network through an easy-to-manage Web-based user interface. Array configuration, management and reporting features are available via the web-based management GUI and accessible via the Ethernet port. Additionally the VTrak family simplifies integration with third-party management applications using industry-standard SNMP and WBEM.



VTrak 8110 Highlights

- :: 8 Hot-Swap drive bays
- :: Supports Serial ATA drives, Parallel ATA drives (with Promise adapter), and mixed disk environments
- :: Supports Native Command Queuing (NCQ) and Tagged Command Queuing (TCQ) for improved performance
- :: 2 SCSI host channels, cluster-ready
- :: Fully redundant, hot-swap power and cooling
- :: 256MB ECC and battery-backed cache
- :: Online array expansion and migration
- :: Multiple global or designated hot-spare drives
- :: Supports multiple LUN carving up to 64 LUNs per subsystem
- :: PerfectRAID[™] technology for robust fatal, media, and disk error handling and recovery

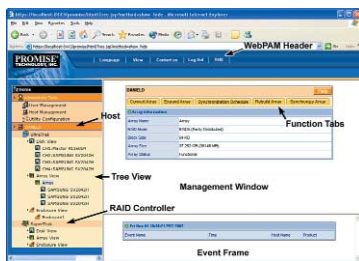


Ideal for two-node application clusters and disk-to-disk back-up





Sophisticated Array Monitoring Tools



Promise Array Management monitoring software offers professional management tools in a simple-to-use, straightforward format. The software works locally or via network TCP/IP connection to monitor arrays. Information windows appear during critical and user-specified events. The software can even be configured to send e-mail notification should an error occur.

The Leader in SATA RAID

Promise Technology, Inc., recognized as the originator and worldwide leader of ATA RAID since 1997, has offered high-performance solutions for PC storage since 1988. Today the world's biggest OEMs and resellers look to Promise for ongoing innovations in ATA RAID design as the company continues to lead with the most powerful and economical alternatives to traditional RAID controllers and subsystems.

www.promise.com

VTrak 8110 Specifications

System and Controller Features

Drive Support	8 Drives (3.5" x 1" only) – Supports Serial ATA (SATA), Parallel ATA (with optional Promise adapter) and mixed disk environments
External I/O Ports	2 Ultra 160 SCSI channels (VHDCI) support up to 2 servers (maximum)
Sustained Throughput	Up to 200 MB/s
Sustained I/Os	Up to 20,000 I/Os per second
Data Cache	256 MB data cache with automatic write cache destaging and 72-hour battery backup protection (upgradable to 512 MB)
Command Queue Depth	256 commands

Operational Features

RAID Levels	RAID 0 - Data striped across 1-8 drives for increased performance but no data protection RAID 1 - Mirrored pairs of drives for data protection and limited increased performance RAID 3 - Independent data access on 3-8 drives (with dedicated parity disk) provides good performance and protection RAID 5 - Independent data access on 3-8 drives (with striped parity) provides most efficient performance and protection balance RAID 10 - Data mirrored then striped across 4-8 drives, ultimate data protection and performance (provides a level of double drive failure protection) RAID 50 - Two RAID 5 arrays striped together to improve performance and provide some additional data protection Any combination of these RAID levels can exist at once
RAID Flexibility	Configurable RAID stripe depth 4,8,16,32, 64 and 128 K or (8,16,32,64,128 and 256) sectors per disk Rebuild priority tuning: adjustment of minimum I/O reserved for server use during rebuild
Hot-spares	Multiple global and designated hot spares improve uptime
Multiple Logical Drive Support	Supports a maximum of 64 LUNs per system Supports up to 8 disk arrays per controller and up to 16 LUNs per disk array All logical drives (LUNs) in a disk array have the same RAID properties i.e. RAID levels, cache settings, stripe size etc. (except logical drive capacity size)
Supported Operating Systems	Windows 2000, Windows 2003, Windows XP, Linux (Red Hat, SuSE), FreeBSD, Solaris, NetWare & Mac OS X

System Management

Management Tools	WebPAM Professional (Ethernet), Command Line Utility (Serial)
Management Interfaces	Ethernet, RS232 (Serial)
Management Protocols	SNMP, SSL, WBEM, Telnet, CIM
Notification	Email, audible (buzzer), and visible (LEDs) alarms

Mechanical Specifications

Current (Maximum)	8 A @ 100 Vac; 4 A @ 200 Vac (current rating with two power cords)
Power Consumption	260 Watts (under load)
Power Supply	Dual 360W, 100-240 Vac auto-ranging, 50-60 Hz, dual hot swap and redundant with PFC, N+1 design
Thermal Output	887 BTU/hour (max current)
Operating Temperature	5°-40°C (-40°-60°C non operational)
Relative Humidity	Maximum 95%
Vibration	Random, 0.21 grms, 5-500 Hz, 30 Mins, X, Y, Z axis
Dimensions (h x w x d)	3.5 x 17.6 x 22.1 in (8.9 x 44.7 x 56.1 cm)
Weight	45.4 lbs (20.6 Kgs) without drives, =55 lbs (25 Kgs) w/8 drives
Certifications	CE, FCC ClassA, BSMI, VCCI, cUL, TUV, MIC, CB
Limited Warranty	3 Years complete system

* Check www.promise.com for latest operating system, SCSI HBA, and hard disk drive compatibility.

©2005 Promise Technology, Inc. Specifications subject to change without notice.

P/N: Fill in here

:: Promise USA

580 Cottonwood Drive
Milpitas, CA 95035
Tel: 408-228-6300
Fax: 408-228-0730
E-mail: sales@promise.com

:: Promise Taiwan

2F, No. 30, Industry E.Rd. IX
Science-Based Industrial Park
Hsin-Chu, Taiwan, R.O.C
Tel: 886-3-578-2395
Fax: 886-3-564-5313
E-mail: sales@promise.com.tw

:: Promise EMEA

European Business Centre
Luchthavenweg 81-125, 5657 EA
Eindhoven, The Netherlands
Tel: 31-40-235-2600
Fax: 31-40-256-9463
E-mail: sales@promise.nl

:: Promise China

Room 1205, Tower 3, Weibok Time-center,
No.17 South Zhong Guan Cun Road
Hai Dian District, Beijing 100081, P.R. China
Tel: 86-010-8857-8085 or 8095
Fax: 86-010-8857-8015
E-mail: sales-china@promise.com