

New Product Release

POS / GNOME USB Dongle for PDR16-RMT Series Recorders

The POS/Gnome text feature has been written into the PDR16-RMT series DVR's but as an extra feature the POS integration was also included in the new software release Ver. 4.12.000 (Build No. 2004073001) onwards. In order to facilitate the Gnome or POS integration, a USB Dongle must be used to enable the integration.

There are two versions of the USB Dongle. One is the Gnome USB Dongle and the other combines the two being the POS/Gnome USB Dongle.

When a PDR16-RMT series DVR is sold for integration to a Gnome or POS system, the appropriate USB dongle must be used.

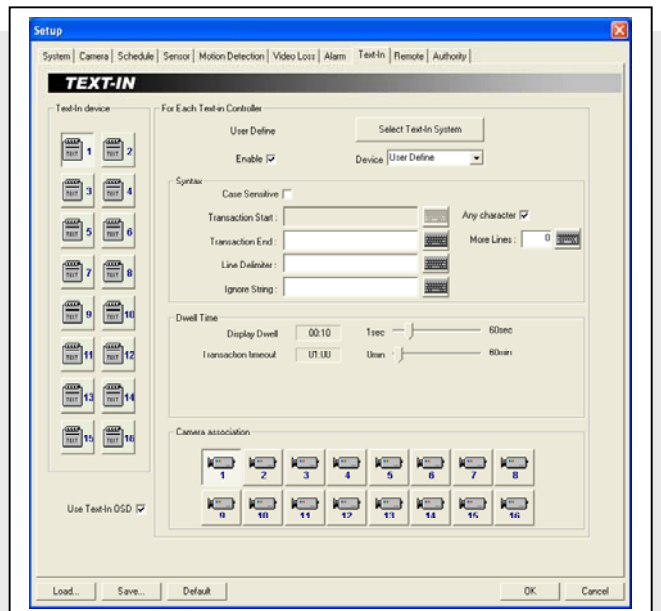
The PDR16-RMT supports up to 16 channels of text-in data. This can be obtained by using two 8 port serial hubs into separate USB ports. The text-in feature allows serial devices such as cash registers to be connected to the PDR16-RMT to enable display and recording of transaction data overlaid onto camera inputs. For single channel operation, the only extra hardware required is the POS USB Dongle and the POS serial cable (cable length is 5m). The POS device can then be connected directly to the serial port of the DVR and configured in the software. The use of multiple POS channels requires a POS hub and USB cable in addition to the dongle.

- S38168 - Gnome USB Dongle**
- S38465 - POS / Gnome USB Dongle**
- S38170 - POS 4 port hub**
- S38171 - POS 8 port hub**
- S38169 - POS serial cable**

Operation:

The PDR16-RMT text-in feature provides two selectable data formats. The most common is the raw ASCII character set. This format allows any serial POS device that supports raw ASCII transmission to be used. Presently, only devices that can use a raw ASCII interface can be used.

The 16 channels of text-in data can be associated with any of the 16 video input channels. This enables text-in data to be overlaid onto any combination of cameras to allow the viewing of text on cameras in a similar location to the POS device.



S38168 - Gnome USB Dongle	S38465 - POS / Gnome USB Dongle
S38170 - POS 4 port hub	S38171 - POS 8 port hub
FS38169 - POS serial cable	